

PRODUCT ANALYSIS



1333 Gateway Drive Suite 1023
 Melbourne FL, 32901
 321-313-5099
sales@canaverallaboratories.com

Sample Information

Producer: AvinX Labs LLC

Strain: UNK

Contact: Lamie Kangaloo

Sample Type: Roll On

kangaloo@msn.com
 941-228-4758

Lab Sample ID: S001

Sampling Date: UNK

Address: 6408 Parkland Dr #103
 Sarasota FL 34243

Sample Received: 25-Feb-19

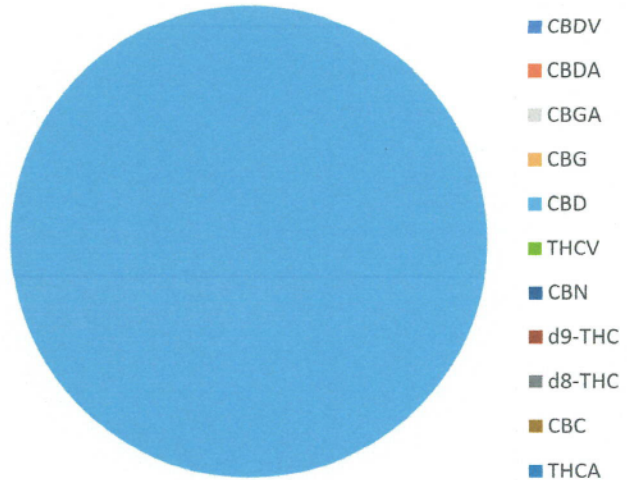
Analysis Completed: 25-Feb-19

Origin Lot#: UNK



Cannabinoid Profile

Compound	Concentration	Unit	Concentration	Unit
CBDV	Not Obs	%	Not Obs	mg/g
CBDA	Not Obs	%	Not Obs	mg/g
CBGA	Not Obs	%	Not Obs	mg/g
CBG	Not Obs	%	Not Obs	mg/g
CBD	0.982	%	9.82	mg/g
THCV	Not Obs	%	Not Obs	mg/g
CBN	Not Obs	%	Not Obs	mg/g
d9-THC	Not Obs	%	Not Obs	mg/g
d8-THC	Not Obs	%	Not Obs	mg/g
CBC	Not Obs	%	Not Obs	mg/g
THCA	Not Obs	%	Not Obs	mg/g
Total CBD	0.982	%	9.82	mg/g
Total THC	Not Obs	%	Not Obs	mg/g



Requested Deviations: Yes No

Approved by: [Signature] Date: 27 Feb 19
 Daniel Vorisek, PhD. Technical Director

All results presented within in this report pertain only to the sample tested as described in the Sample Information section above. Sample was homogenized during sample preparation for analysis. Canaveral Laboratories was not involved in the statistical sampling of the production lot or batch and cannot state any association of the sample results to the production lot or batch.

This report may not be reproduced except in full, without written approval from Canaveral Laboratories LLC.

Potency - HPLC/UV

<LOQ - Below limit of quantification (below 1 ug/mL)

Trace - Trace Quantities

mg - milligram; g - gram

Not Obs. - Not observed.

Total CBD = (%CBDA * 0.877) + %CBD

Total THC = (%THCA * 0.877) + %d9-THC

PRODUCT ANALYSIS



1333 Gateway Drive Suite 1023
 Melbourne FL, 32901
 321-313-5099
sales@canaverallaboratories.com

Sample Information

Producer: AvinX Labs LLC

Strain: UNK

Contact: Lamie Kangaloo

Sample Type: Tincture

kangaloo@msn.com
 941-228-4758

Lab Sample ID: S002

Sampling Date: UNK

Address: 6408 Parkland Dr #103
 Sarasota FL 34243

Sample Received: 25-Feb-19

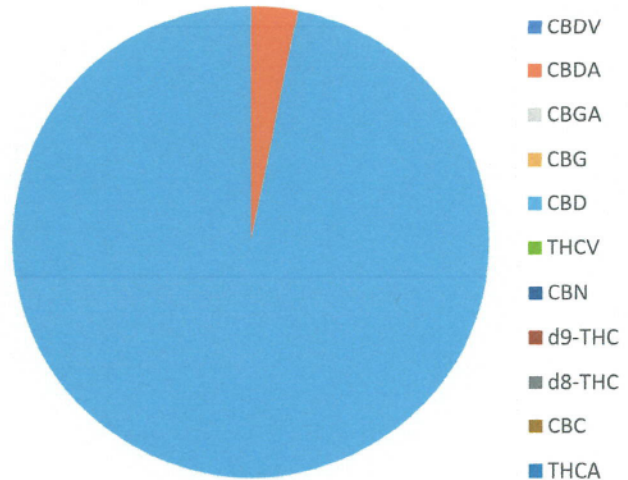
Analysis Completed: 25-Feb-19

Origin Lot# : UNK



Cannabinoid Profile

Compound	Concentration	Unit	Concentration	Unit
CBDV	< LOQ	%	< LOQ	mg/g
CBDA	0.0575	%	0.575	mg/g
CBGA	Not Obs	%	Not Obs	mg/g
CBG	Not Obs	%	Not Obs	mg/g
CBD	1.74	%	17.4	mg/g
THCV	Not Obs	%	Not Obs	mg/g
CBN	Not Obs	%	Not Obs	mg/g
d9-THC	< LOQ	%	< LOQ	mg/g
d8-THC	Not Obs	%	Not Obs	mg/g
CBC	< LOQ	%	< LOQ	mg/g
THCA	Not Obs	%	Not Obs	mg/g
Total CBD	1.79	%	17.9	mg/g
Total THC	< LOQ	%	< LOQ	mg/g



Requested Deviations: Yes No

Approved by: [Signature] Date: 27 Feb 19
 Daniel Vorisek, PhD. Technical Director

All results presented within in this report pertain only to the sample tested as described in the Sample Information section above. Sample was homogenized during sample preparation for analysis. Canaverall Laboratories was not involved in the statistical sampling of the production lot or batch and cannot state any association of the sample results to the production lot or batch.

This report may not be reproduced except in full, without written approval from Canaverall Laboratories LLC.

Potency - HPLC/UV

<LOQ - Below limit of quantification (below 1 ug/mL)

Trace - Trace Quantities

mg - milligram; g - gram

Not Obs. - Not observed.

Total CBD = (%CBDA * 0.877) + %CBD

Total THC = (%THCA * 0.877) + %d9-THC

PRODUCT ANALYSIS



1333 Gateway Drive Suite 1023
 Melbourne FL, 32901
 321-313-5099
sales@canaverallaboratories.com

Dosage

Sample Weight (g)	Dosage (mg)
0.248	4.94

Sample Information

Producer: AvinX Labs LLC

Strain: UNK

Sample Type: Tablet

Contact: Lamie Kangaloo

kangaloo@msn.com

941-228-4758

Address: 6408 Parkland Dr #103
 Sarasota FL 34243

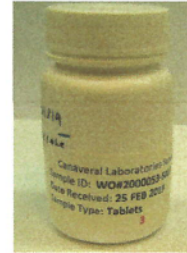
Lab Sample ID: S003

Sampling Date: UNK

Sample Received: 25-Feb-19

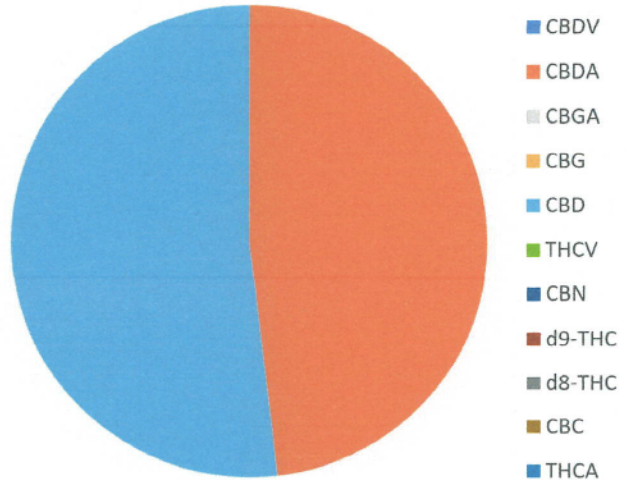
Analysis Completed: 25-Feb-19

Origin Lot# : UNK



Cannabinoid Profile

Compound	Concentration	Unit	Concentration	Unit
CBDV	Not Obs	%	Not Obs	mg/g
CBDA	1.02	%	10.2	mg/g
CBGA	Not Obs	%	Not Obs	mg/g
CBG	Not Obs	%	Not Obs	mg/g
CBD	1.1	%	11	mg/g
THCV	Not Obs	%	Not Obs	mg/g
CBN	Not Obs	%	Not Obs	mg/g
d9-THC	< LOQ	%	< LOQ	mg/g
d8-THC	Not Obs	%	Not Obs	mg/g
CBC	< LOQ	%	< LOQ	mg/g
THCA	Not Obs	%	Not Obs	mg/g
Total CBD	1.99	%	19.9	mg/g
Total THC	< LOQ	%	< LOQ	mg/g



Requested Deviations: Yes No

Approved by: [Signature] Date: 27 Feb 19
 Daniel Vorisek, PhD. Technical Director

All results presented within in this report pertain only to the sample tested as described in the Sample Information section above. Sample was homogenized during sample preparation for analysis. Canaveral Laboratories was not involved in the statistical sampling of the production lot or batch and cannot state any association of the sample results to the production lot or batch.

This report may not be reproduced except in full, without written approval from Canaveral Laboratories LLC.

Potency - HPLC/UV

<LOQ - Below limit of quantification (below 1 ug/mL)

Trace - Trace Quantities

mg - milligram; g - gram

Not Obs. - Not observed.

Total CBD = (%CBDA * 0.877) + %CBD

Total THC = (%THCA * 0.877) + %d9-THC